

Puerto Rico: See the [3-P Series \(Peers, Puerto Rico, Peru....\)](#) [word version](#)

[Puerto Rico's Financial Crisis](#) [Life after Debt: how many lost decades?](#)

Cuba: Brookings Institution: At the [Kennedy Center May 2018](#) [WHO praises Cuba's aid in Bolivia](#)
[What will Raul's Castro's legacy?](#) What will be Raúl Castro's legacy? <http://brook.gs/2zY9Xci>

Nick DiBartolo: [Cuba's Reintegration and Growth through an American Cameraman's Lens](#)

Vidal and Brown (2015) [Cuba's Economic Reintegration](#) [pdf version](#)

CEPAL: [Havana celebrates 40 years of progress in equality and women's rights in the region](#) with focus on the pending challenges

Peru: NY Times [Peru Machu-Picchu](#)

El Salvador and [Honduras](#) (Murder capital of the world) Growth Diagnostics

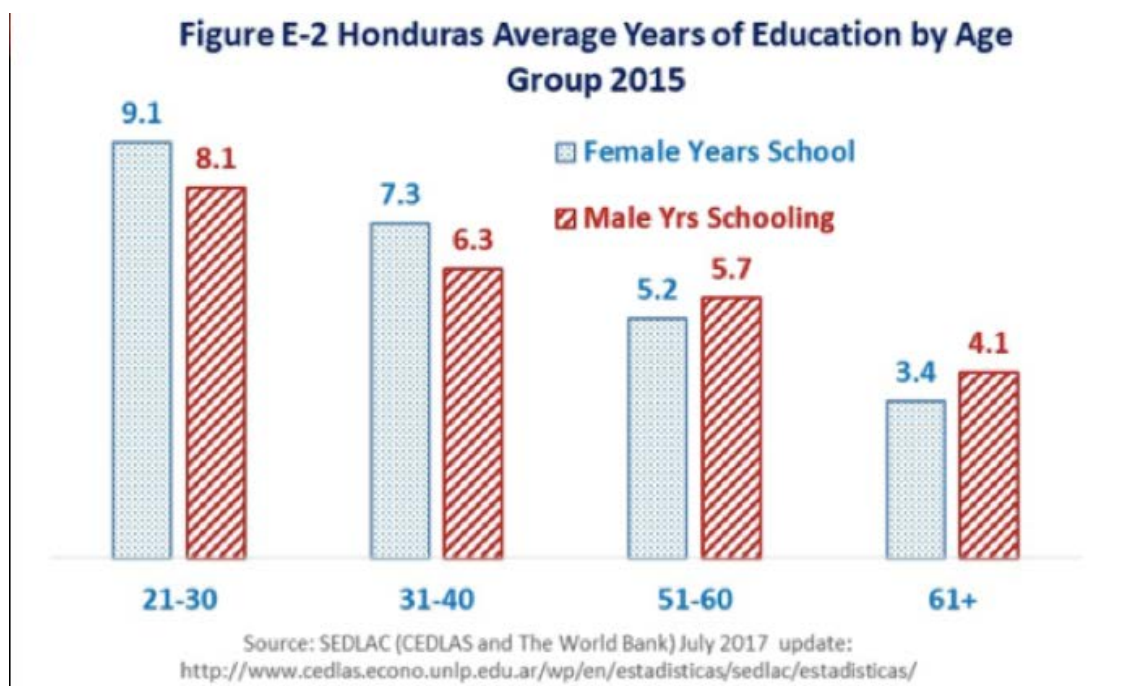
Getting the Diagnosis Right: [Binding Constraint Analysis](#)

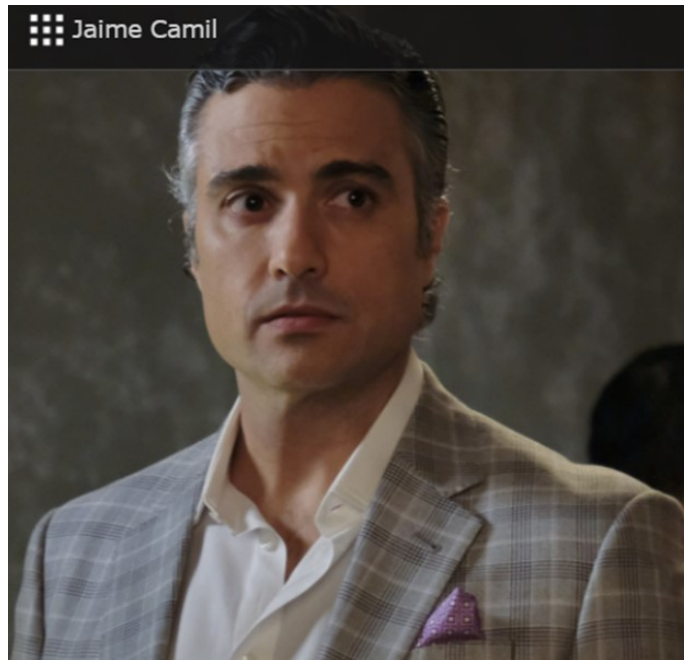
Partnership for Growth http://pdf.usaid.gov/pdf_docs/pnaeb762.pdf

The California Effect

<http://www.tandfonline.com/doi/abs/10.1080/03050629.2011.568855?src=recsys&journalCode=gini20>

Honduras Education (Brains vs. Brawn in the Roy, 1951)





[Coco on Rotten Tomatoes](#) (now down to 97%)

Mexico Dani Rodrik and Santiago Levy (2018) [The Mexican Paradox](#)



Aug 10, 2017 | SANTIAGO LEVY, DANI RODRIK

After a series of macroeconomic crises in the mid-1990s, Mexico undertook bold reforms, from liberalizing its economic policies to investing in education. But, while these efforts brought some benefits, they failed to spur significant productivity and economic growth.

FEATURED

1 **The US Is Exporting Obesity**
Dec 1, 2017 | KENNETH ROGOFF

Lecture Monday : Racial Mixing in Latin America:

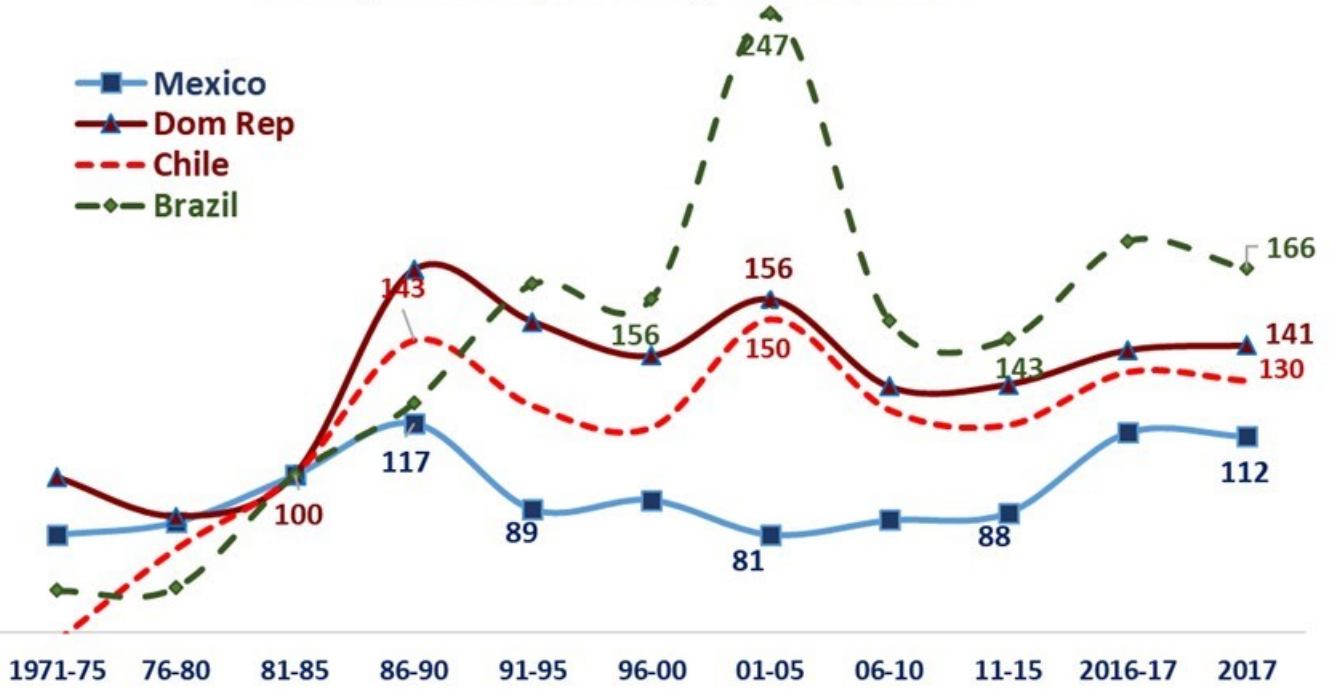
Mixed Motives of Unaccompanied Child Migrants [CMS teaser](#)

Harvard Shorenstein Center: Structural view of race: [Google Street View predicts voting patterns and race](#)

Ilona Katzew (2005) "A marvelous variety of Colors: Racial Ideology and the Sistema de Castas"

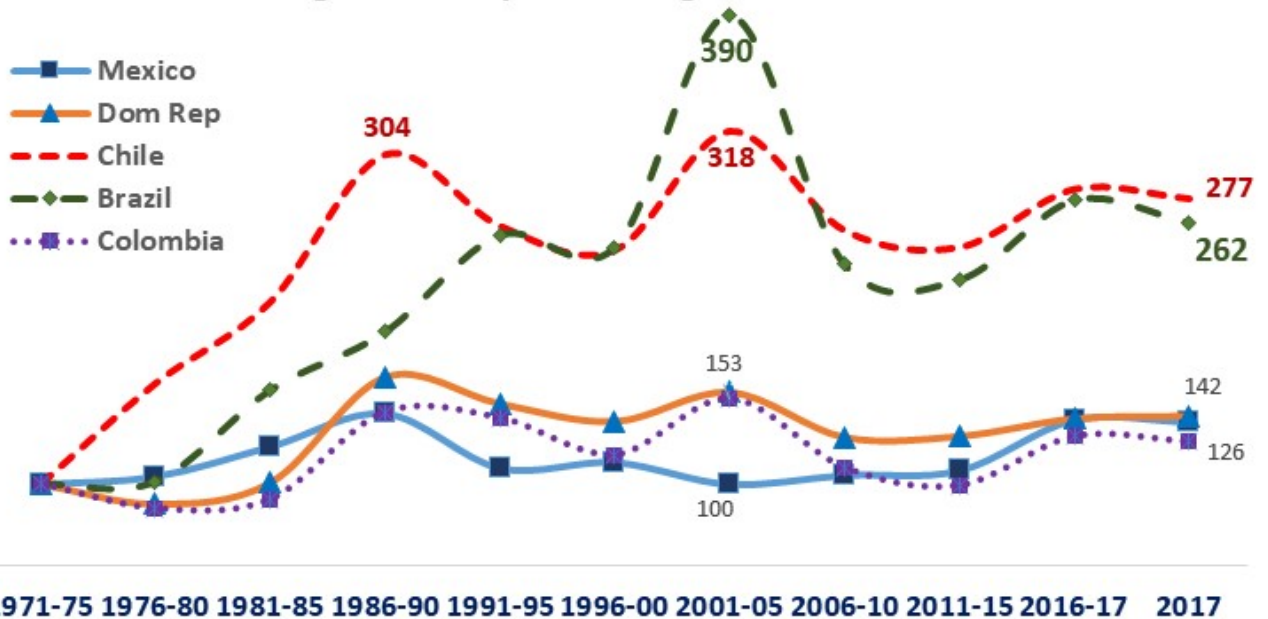
www.gdsnet.org/KatzewIlona_Casta_System_Chapter2.pdf

Figure RER-11 Brazil, Chile, Colombia Dom Rep, and Mexico Real Exchange Rates 5 year Average 1981-85 =100



Source: USDA ERS Annual Real Exchange Rates updated November 30th 2018

Figure RER-11 Brazil, Chile, Colombia Dom Rep, and Mexico Real Exchange Rates 5 year Average 1971-75 =100



Source: Kari Heerman (202-694-5250, keheerman@ers.usda.gov) ERS researchers derived annual exchange rates by averaging 12 monthly real exchange rates.

[Brazil vs. Mexico CCTs Economist magazine 2005](#)

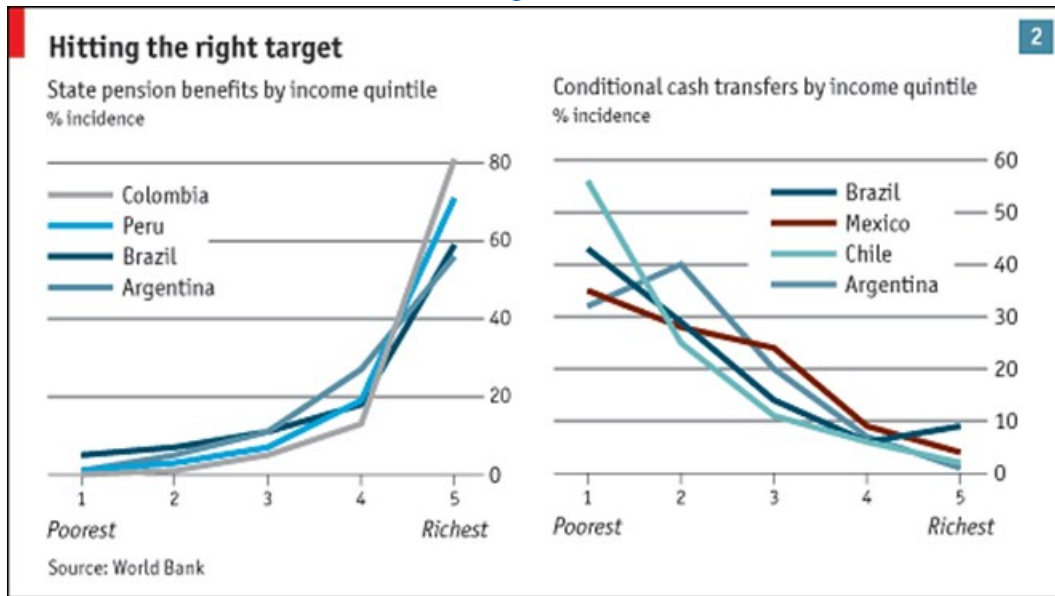
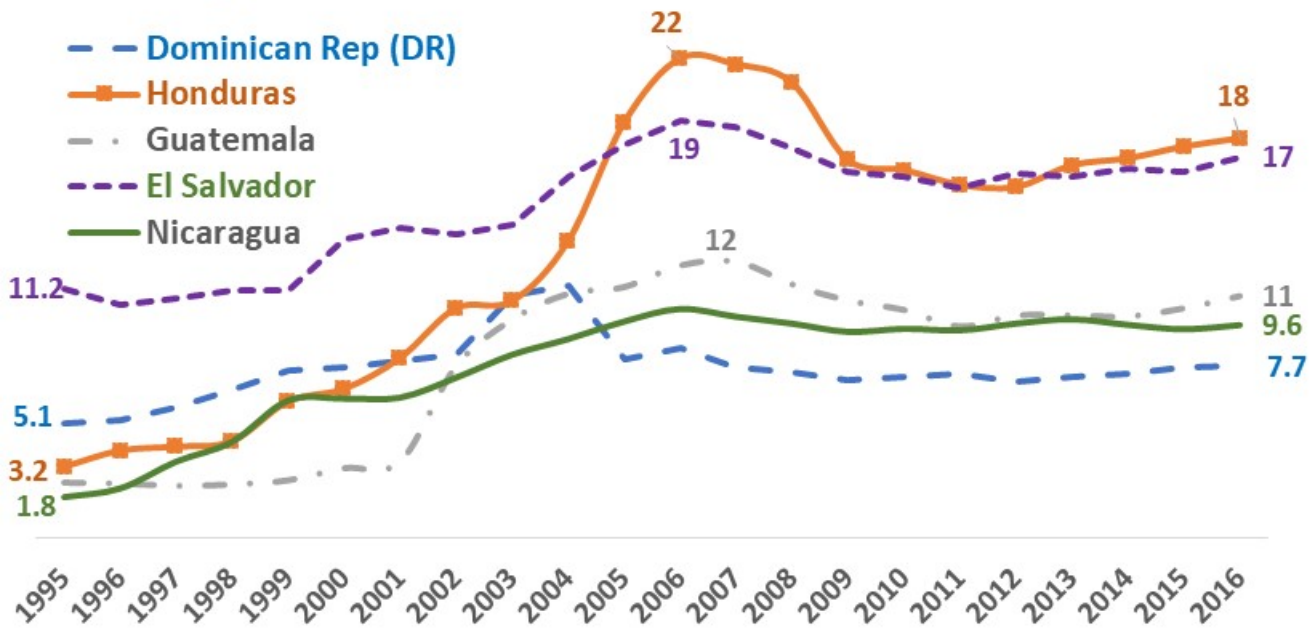


Figure R-7 CAFTA-DR Remittances



Source: World Bank, WDI interactive graphic



Figure E-2 Honduras Average Years of Education by Age Group 2015



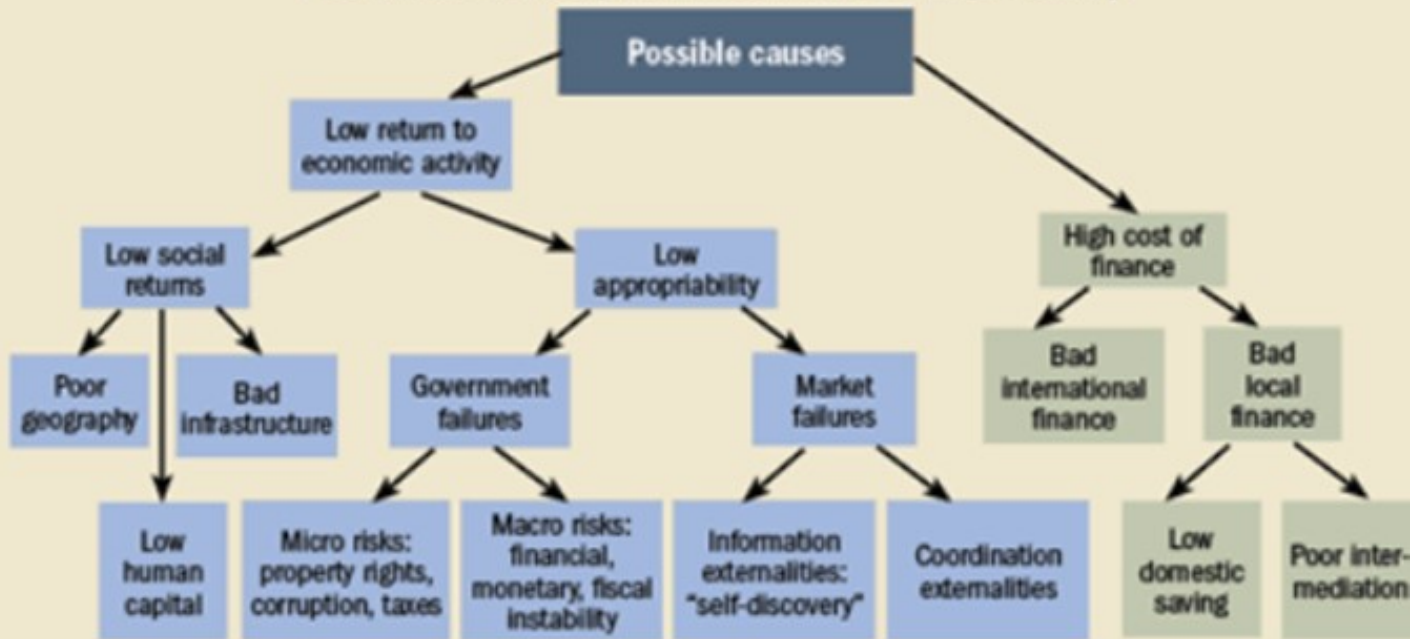
Source: SEDLAC (CEDLAS and The World Bank) July 2017 update:
<http://www.cedlas.econo.unlp.edu.ar/wp/en/estadisticas/sedlac/estadisticas/>

- In 2011: remittances represent 17% of the GDP growth
- 2011: ¾ of Honduran immigrants in The US are illegal immigrants
- Remittance now a way of helping rural population suffering from low coffee prices.
- And they are a way to allow the increase of girl's education.
- (CEPAL, 2014) Remittances allowed a fight against poverty thanks to women determination and migrations

Time for a checkup

A decision tree, such as the one below, can help identify the biggest obstacles to growth.

Problem: Low levels of private investment and entrepreneurship



Source: Hausman, Rodrik, and Welasco (2005).

[Why is Texas so Successful? Visual Politik EN](#) Looking for a winter break research project? We have a small grant from Mission Foods and some hypotheses regarding why are Mexicans still going to Texas and Florida but leaving California and New York...including no surprisingly (perhaps) jobs and less expensive housing...